

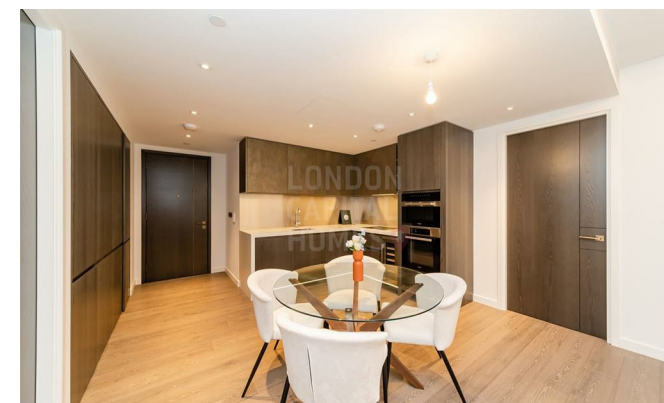


Thames City, 8 Carnation Way

, London SW8 5FR

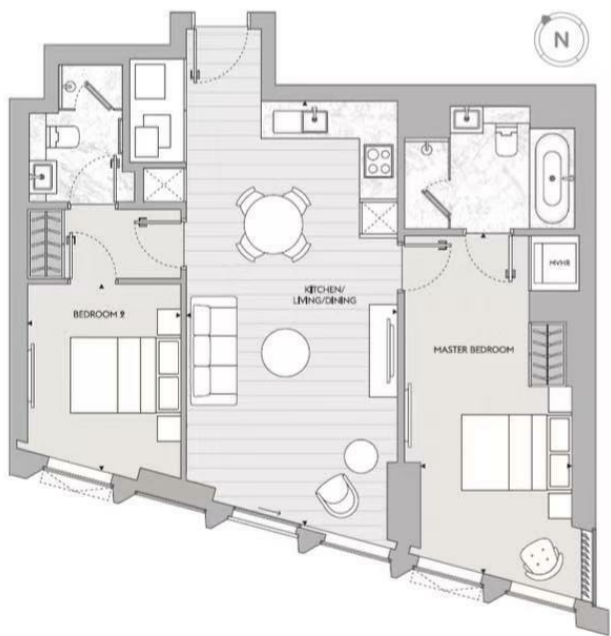
- Internal Area: 82m² / Utility Room / Floor to Ceiling Windows
- 24 hour concierge
- Walking Distance to Vauxhall and Nine Elms station
- CTB-F
- Fully Fitted Kitchen
- Cinema / Gym / Swimming Pool / Jacuzzi
- EPC-B

£1,220,000 Leasehold

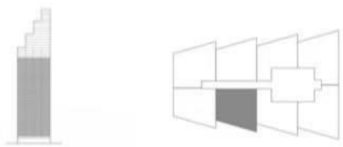


Local Authority **Wandsworth**
Council Tax Band **F**
EPC Rating **B**

Typical Two Bed Apartment – Unit 07 – Floor Plan



NIA	81.6m ² / 878 ft ²
ASPECT	River View US Embassy View
KITCHEN/LIVING/DINING	6.9m x 3.8 m
MASTER BEDROOM	6.2m x 2.8m
BEDROOM 2	3.4m x 2.8m



London Office Office

Spaces Victoria, 25 Wilton Road, Pimlico,
London, SW1V 1LW

Contact

020 3084 3094
XL@londonvictoriagroups.co.uk
www.londonvictoriagroups.co.uk

Agents Note: Whilst every care has been taken to prepare these particulars, they are for guidance purposes only. All measurements are approximate and for general guidance purposes only and whilst every care has been taken to ensure accuracy, they should not be relied upon and potential buyers/tenants are advised to recheck the measurements.